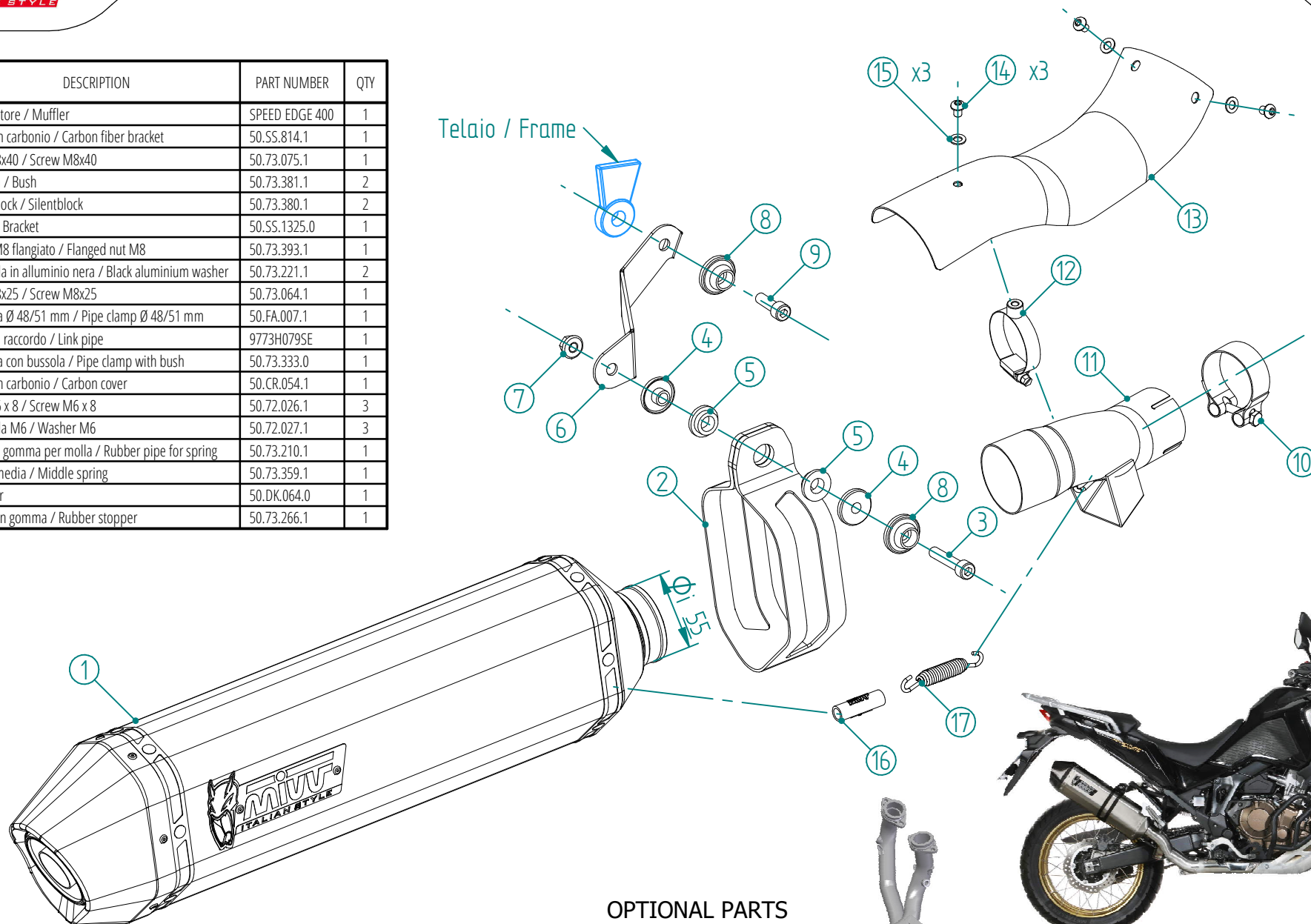


#	DESCRIPTION	PART NUMBER	QTY
1	Silenziatore / Muffler	SPEED EDGE 400	1
2	Staffa in carbonio / Carbon fiber bracket	50.SS.814.1	1
3	Vite M8x40 / Screw M8x40	50.73.075.1	1
4	Boccola / Bush	50.73.381.1	2
5	Silentblock / Silentblock	50.73.380.1	2
6	Staffa / Bracket	50.SS.1325.0	1
7	Dado M8 flangiato / Flanged nut M8	50.73.393.1	1
8	Rondella in alluminio nera / Black aluminium washer	50.73.221.1	2
9	Vite M8x25 / Screw M8x25	50.73.064.1	1
10	Fascetta Ø 48/51 mm / Pipe clamp Ø 48/51 mm	50.FA.007.1	1
11	Tubo di raccordo / Link pipe	9773H079SE	1
12	Fascetta con bussola / Pipe clamp with bush	50.73.333.0	1
13	Cover in carbonio / Carbon cover	50.CR.054.1	1
14	Vite M6 x 8 / Screw M6 x 8	50.72.026.1	3
15	Rondella M6 / Washer M6	50.72.027.1	3
16	Tubo in gomma per molla / Rubber pipe for spring	50.73.210.1	1
17	Molla media / Middle spring	50.73.359.1	1
-	dB killer	50.DK.064.0	1
-	Tappo in gomma / Rubber stopper	50.73.266.1	1

Telaio / Frame



OPTIONAL PARTS
H.079.C1 - NO KAT PIPE



APPLICAZIONI / APPLICATIONS		
Codice / Code	Silenziatore / Muffler	Tubo / Pipe
H.079.LRB	STEEL BLACK	INOX / ST. STEEL
H.079.LRX	INOX / ST. STEEL	

NOTA: L'installazione di questo scarico prevede la rimozione dei cavi di comando del motore della valvola
NOTICE: The installation of this exhaust involves removing the valve motor control cables