

# HYPHERPRO

## STEERING DAMPER MOUNTING KIT

for

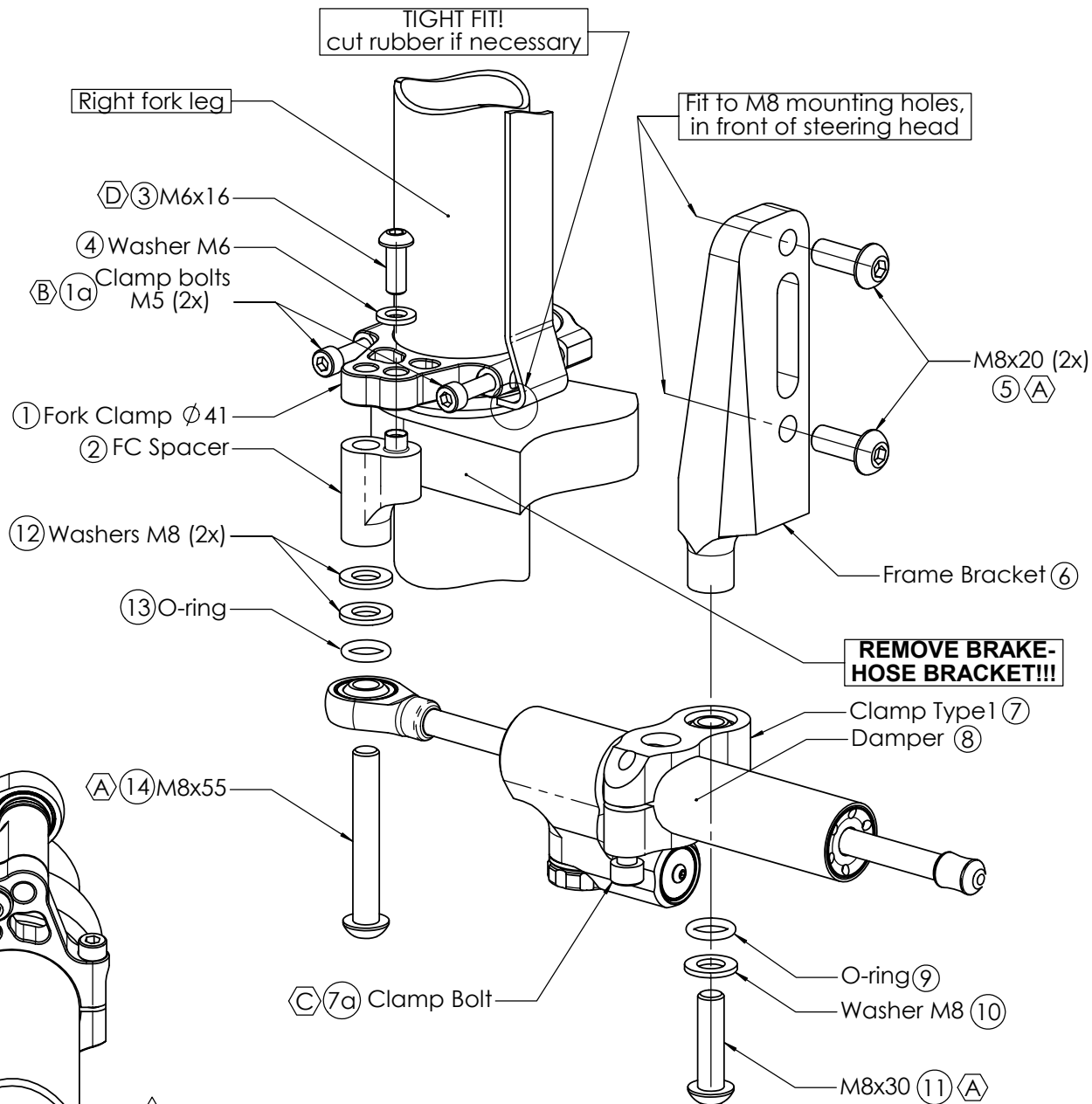
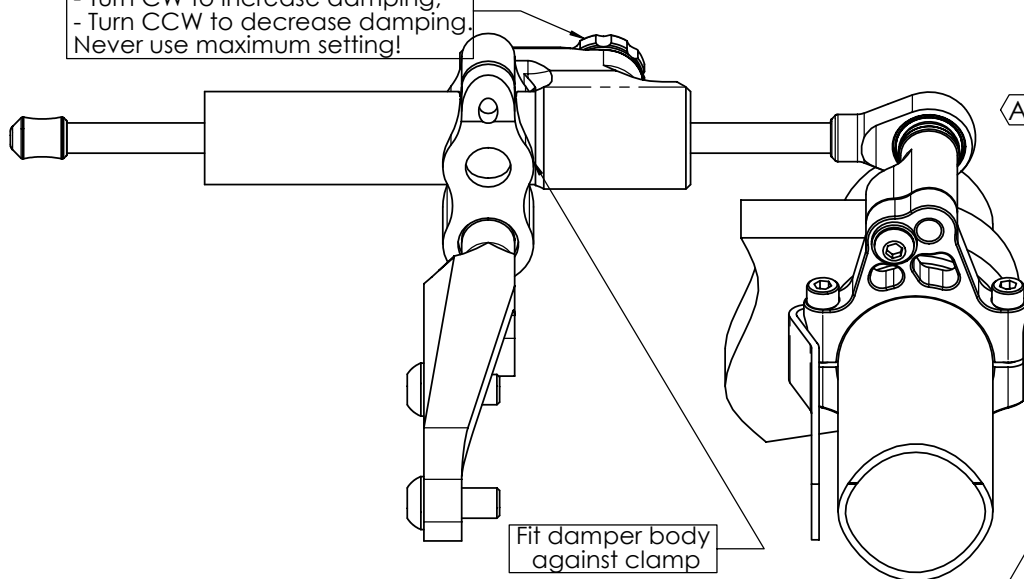
### SUZUKI SV650N Model 2003 ->

#### MK-SU06-B001 PART LIST

SD stroke 75	1	M8x30 Button head	1
Tube Clamp TYPE 1	1	M8x55 Button head	1
O-Ring	2	Washer M6 $\phi$ 12	1
Fork Clamp $\phi$ 41	1	Washer M8 $\phi$ 16	3
FC Spacer	1	-	-
CNC Frame Bracket	1	-	-
M6x16 Button head	1	-	-
M8x20 Button head	2	-	-

ALL IDEAS, DESIGNS ARRANGEMENTS AND PLANS INDICATED OR REPRESENTED BY THIS DRAWING ARE OWNED BY HYPERPRO AND WERE CREATED, EVOLVED AND DEVELOPED FOR USE ON AND IN CONNECTION WITH THE SPECIFIC PROJECT. NONE SUCH IDEAS, DESIGNS, ARRANGEMENTS OR PLANS SHALL BE USED BY OR DISCLOSED TO ANY PERSON, FIRM OR CORPORATION FOR ANY PURPOSE WHATSOEVER WITHOUT THE WRITTEN PERMISSION OF HYPERPRO.

Damping adjustment knob,  
- Turn CW to increase damping,  
- Turn CCW to decrease damping.  
Never use maximum setting!



(A) 14-17Nm / 124-150Lbs.In / 10.3-12.5Lbs.Ft	(C) 6Nm / 53Lbs.In / 4.4Lbs.Ft
(B) 8Nm / 70Lbs.In / 5.9Lbs.Ft	(D) 5-9Nm / 44-80Lbs.In / 4.0-6.4Lbs.Ft

See [WWW.HYPERPRO.COM](http://WWW.HYPERPRO.COM) for the latest pictures, modifications, specs. and e-drawings of this steering damper kit.

# HYPERPRO

## STEERING DAMPER MOUNTING KIT

for

### SUZUKI SV650N Model 2003 ->

## MK-SU06-B001 INSTALLATION INSTRUCTIONS

### In general:

HYPERPRO can not be held responsible in any way for any form of physical, material, financial or other damage arising from use, assembly or overhaul of HYPERPRO products. HYPERPRO reserves the right to make changes without prior notice.

This product is ONLY TO BE INSTALLED BY A PROFESSIONAL MECHANIC.

This product is only to be used for the motorcycle brand, model and year stated specifically on top of the pages of this manual.

DO NOT attempt to install this product on motorcycles from any different brand, model and/or year than stated on the pages of this manual.

DO NOT use this kit for cars, boats, jet-skis, snowmobiles, ATV's, aircraft, hovercrafts or any other vehicle and/or purpose.

HYPERPRO steering dampers are FOR RACE USE ONLY, NOT FOR HIGHWAY USE!

### Before installation:

- Please read the entire manual carefully before starting the installation!
- Check if you have all the tools required. Good tools are a must.
- Protect your bike at the most important places in and around the work area (e.g. tank, fairing, frame, etc.), with a blanket, towel or similar.

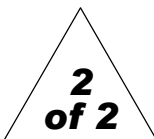
### During installation:

- Check all operations and parts carefully before, during and after performing each step.
- Clean all surfaces that are required for fitting parts together or for applying self adhesives or loctite, thoroughly with contact cleaner or another degreaser, unless otherwise stated.
- Be careful not to damage or scratch any part of your bike.
- ALWAYS work relaxed and concentrated!! It is very easy to damage something or make a mistake.

### After installation:

- Check and make sure that there is no contact between any part of the steering damper kit and any part of the motorcycle. The kit should not hit anything. Steering movement should not be limited by the steering damper. If the steering movement is limited, adjust the position of the tube in the clamp until steering movement is normal again. Do not forget to tighten the clamp bolt again!
- ALWAYS check the steering movement and feeling before each ride!
- FIRST RIDES: Start with the damper turned fully open (turn adjuster knob fully counter clockwise). Start adjusting in between rides with steps of MAX. 2 CLICKS (0.25 TURN) EACH TIME, until the damper is working satisfactory for your riding style.
- NEVER USE MAXIMUM SETTING, ALWAYS OPEN AT LEAST 2 CLICKS (0.25 TURN).

- WARNING ! DAMPER HAS AN ACTIVE / SPEEDSENSITIVE DAMPING SYSTEM;
  - Steering with NORMAL MOVEMENT should be FREE !!
  - Steering with FAST MOVEMENT should be CONTROLLED BY DAMPER !!
- HYPERPRO uses a special seal to reduce friction. The seal uses an oil film to work properly. It is normal that some oil can appear on the pistonrod.
- Damper works with oil: DAMPING CAN BE HARDER AT LOWER TEMPERATURES!



### Step 1: installing the fork clamp

- Fork clamp assembly (1)
- FC Spacer L30 (2)
- Bolt M6x16 button head (3)
- Washer M6  $\phi$  16 (4)

Fit the Spacer (2) to the fork clamp (1) as shown on page 1 and use the M6 bolt (3) and washer (4) to fixate. If necessary, use M8 bolt (14) for positioning the second hole. Tighten the M6 bolt with a torque of approx. 5-9Nm/44-80Lbs.In/4.0-6.4Lbs.Ft

Remove both M5 clamp bolts (1a) from the fork clamp (1). Fit the clamp around the right fork leg, inside the headlight mount as shown in the right picture on page 1. This is a tight fit, it may be necessary to shorten the rubber of the headlight mount. Replace the bolts (1a) and tighten the bolts with a torque of approx. 8Nm/70Lbs.In/5.9Lbs.Ft.

REMOVE THE BRAKE HOSE RETAINING BRACKET FROM THE LOWER TRIPLE TREE

### Step 2: installing the frame bracket

- Bolt M8x20 button head (5)
- Frame bracket (6)

Fit the frame bracket (6) to the Left side of the steering head mounts, behind the headlamp. Use the M8 bolts (5) to fit and tighten the bolts with a torque of approx. 14-17Nm/124-150Lbs.In/10.3-12.5Lbs.Ft.

### Step 3: installing the steering damper

- Clamp Type 1 (7)
- Steering damper (8)
- 2x O-ring (9, 13)
- 3x Washer M8  $\phi$  16 (10, 12)
- Bolt M8x30 button head (11)
- Bolt M8x55 button head (14)

Shove the damper (8), with the end knob-side first, through the clamp (7) until the body is fully against the clamp. Make sure it is fitted according to page 1 and tighten the clamp bolt (7a) with a torque of approx. 6Nm/53Lbs.In/4.4Lbs.Ft.

Use the O-ring (9), washer (10), and M8 bolt (11) to fit the clamp (7) to the frame bracket (6). Tighten the bolt with a torque of approx. 14-17Nm/124-150Lbs.In/10.3-12.5Lbs.Ft.

Use the washers (12), O-ring (13) and M8 bolt (14) to fit the ball-end of the damper to the fork-clamp (1). Tighten the bolt with a torque of approx. 14-17Nm/124-150Lbs.In/10.3-12.5Lbs.Ft.

Check if the damper is level horizontal. Check if the damper does not touch anything when steering from left to right. Check if the bike can make its full steering angle from left to right.

See [WWW.HYPERPRO.COM](http://WWW.HYPERPRO.COM) for the latest pictures, modifications, specs. and e-drawings of this steering damper kit.