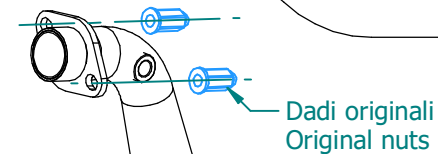
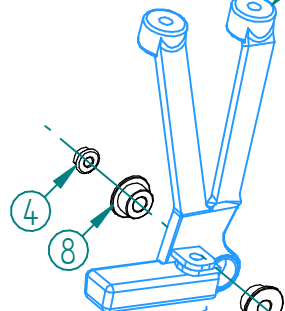


#	DESCRIPTION	PART NUMBER	QTY
1	Tubo di raccordo / Link pipe	9773VO002S2	1
2	Vite M8x20 / Screw M8x20	50.73.894.1	1
3	Rondella in alluminio / Aluminium washer	50.73.857.1	1
4	Dado M8 flangiato / Flanged nut M8	50.73.393.1	2
5	Vite M8x60 / Screw M8x60	50.73.078.1	1
6	Rondella in alluminio / Aluminium washer	50.73.063.1	1
7	Distanziale in alluminio / Aluminium spacer	50.SS.454.1	1
8	Boccola / Bush	50.73.182.1	2
9	Dado M6 / Nut M6	50.73.146.1	2
10	Rondella M6 / Washer M6	50.72.027.1	4
11	Vite M6 x 12 / Screw M6 x 12	50.72.024.1	2
12	Gommino per staffa / Rubber for bracket	50.73.040.1	1
13	Staffa / Bracket	50.SS.032.0	1
14	Silenziatore / Muffler - dB killer 50.DK.021.0	GP	1
15	Tubo in gomma per molla / Rubber pipe for spring	50.73.210.1	1
16	Molla media / Mid-size spring	50.73.359.1	1



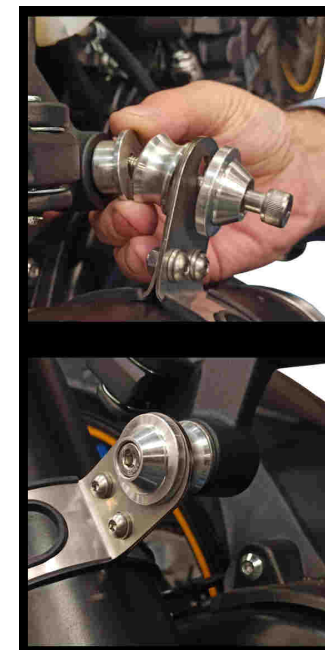
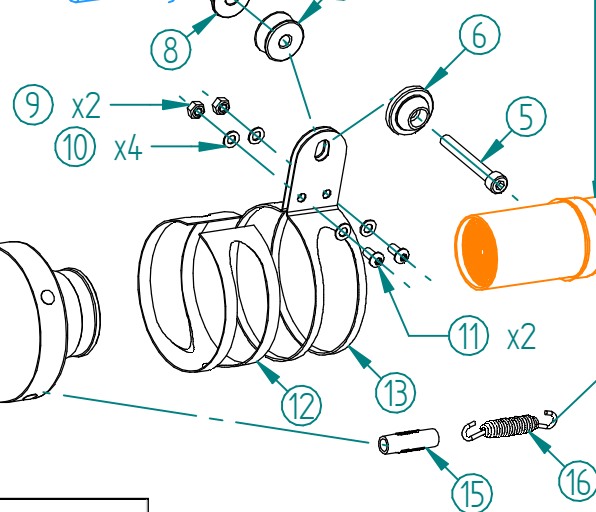
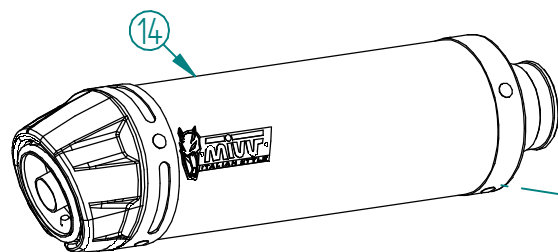
Pedana originale
Original footrest



Catalytic Converter
Cod. ACC.041.A1

Optional for
VO.002.L2SC - VO.002.LXBC
Included in
VO.002.K2SC - VO.002.KXBC

Telaio
Frame



APPLICAZIONI / APPLICATIONS

CODICE / CODE	SILENZIATORE / MUFFLER	TUBO / PIPE	FASCETTA /	NOTE
VO.002.L2SC	CARBONIO (coppa carbonio) / CARBON FIBER (carbon cap)	INOX / ST. STEEL	INOX / ST. STEEL	CATALYTIC CONVERTER
VO.002.LXBC	INOX NERO (coppa carbonio) / STEEL BLACK (carbon cap)			NOT INCLUDED
VO.002.K2SC	CARBONIO (coppa carbonio) / CARBON FIBER (carbon cap)	INOX / ST. STEEL	INOX / ST. STEEL	CATALYTIC CONVERTER
VO.002.KXBC	INOX NERO (coppa carbonio) / STEEL BLACK (carbon cap)			INCLUDED